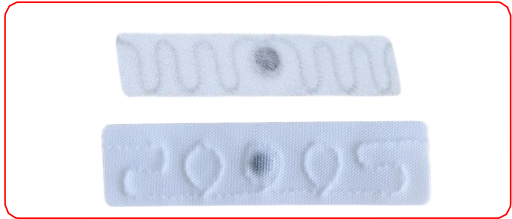
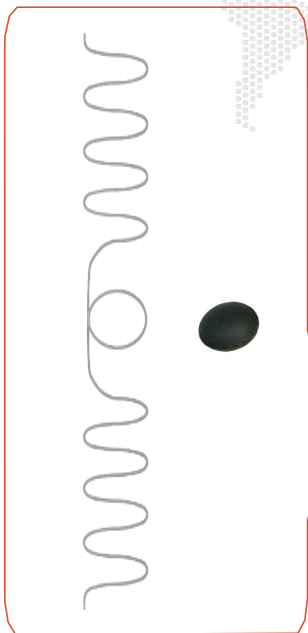


# JYL-FL 5512/5815



JYL-FL UHF Textile laundry tag is a coupled tag designed for textile products that go through a variety of industrial laundering processes, including sterilization and ironing. Its manufactured with UHF technology (860-960 MHz) and conforms to international standards EPC Class1 Gen2, ISO 18000. The JYL-Tech UHF fabric laundry tag is capable of mass reading from a distance of a few meters. These tags identifies, tracks and manages linen and textile assets effectively. For establishments that require a constant flow of cleaning linens, uniforms, workwear, medical apparel or cleaning supplies, laundry tags assist automated systems to track large numbers of individual items faster and more accurately.

## Architecture



Textile laundry tag consists of 3 main parts which can withstand harsh industrial environment for laundry processes operating for hundreds cycles.

### Part1: LaundryChips

A silicon chip protection by rigid resin housing withstand harsh industrial laundry environment repeat for hundreds of circulations washing

### Part2: Laundry Antenna

Antenna made of flexible, anti-oxidative stainless steel fibers, coated with Teflon, resistant to high temperature chemical detergent liquids during all laundry processes

### Part3: FABRIC SUBSTATE

Based on the RFID module and antenna, the components are held in place and withstand millions of shocks. The fabric material requires a series of pretreatments to keep shrinkage and deformation within minimum range, and is coated with a silicone heat adhesive as a laminating overlays to protect the laundrychip inside

## Applications

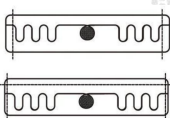
- Industrial washing | Management of uniforms | Medical apparel management | Military clothing management | Personnel patrol management | Fire fighting equipment management

## Highlights

- More than 200 washing cycles ( under industrial washing environment pressure 60 bars, heating at 200°C )
- Small dimensions & Maximum flexibility, with ultra-high-density bulk reading;
- Available in 3 versions: source tagging(sewn), patchable (heat-sealable) and in pouch;
- On Demand Service: Laser logo with EPC encoding in RFID chip;

## Installation

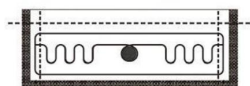
Stitching



Heat sealed



Pouching



Tag Type	JYL-FL5815	JYL-FL3515
Tag Dimensions	58(L) x 15(W) x 1.5(H)mm	35(L) x 15(W) x 1.5(H)mm
Tag Weight(Approx.)	0.6g	0.6g
Tag Warranty	200 wash cycles or 2 years from shipping date (whichever comes first)	
Tag Memory	EPC 96bits , User 0bits	
Data Retention	20 years	
Read Distance	Up to 4 ~ 7meters (ERP=2W fixed reader)	
Operating Power	Passive, operates through antenna's RF field	
Operating Frequency	865~928MHz	
Typical Washing Cycle	Washing: 90°C(194oF), 15 minutes, 200 cycle Pre-drying in Tumbler: 180°C(320oF), 30minutes Ironer: 180°C(356oF), 10 seconds, 200 cycles Sterilization Process: 135°C(275oF), 20 minutes	
Autoclave	Air removal: +100°C(+212° F), 5mins, 0.1bar Sterilizing:+134°C(+273° F), 10mins, 3.25bar Drying:+45°C(+113° F), 15mina, 0.2bar	
Patching Instruction	+204°C(399° F), 12secs, 0.5kg/cm2	
Storage Temperature	-40°C to +120°C(-40° F to +248° F)	
Chemical Resistance	Normal common chemicals in the washing processes	
Compliance	ISO/IEC 18000-6C EPC Class 1 Gen 2	
Certification	OEKO-TEX® , ATP	

## Order Code

**JYL=** Laundry Tag Brand **FL=**Fabric Laundry

**3515/5815/7010/7015/7018/7512/7515** = Laundry Tag Size Options

**T** = Tagging (to be sewn into textile)

**H** = Heat-Sealable (to be heat-sealed on textile)

**P** = Pouching (pouch with generic RFID logo embroidered)

**E** = Re-programmable(to be encoded on chips)

**L** = Laser (Numbering, Bracode, EPC laser-marked)

**For example:** JYL-FL7015-T = JYL Fabric Laundry sewing type Tag with 70\*15mm size

